



Dear MIP&L members and friends,

\$\$\$ Green Grows 2 Ways – Take One to the Bank \$\$\$



The number of jobs in America's emerging clean energy economy grew nearly two and a half times faster than overall jobs between 1998 and 2007, according to a report by The Pew Charitable Trusts. Pew developed a clear, data-driven definition of the clean energy economy and conducted the first-ever hard count across all 50 states of the actual jobs, companies and venture capital investments that supply the growing market demand for environmentally friendly products and services.

Pew found that jobs in the clean energy economy grew at a national rate of 9.1 percent, while traditional jobs grew by only 3.7 percent between 1998 and 2007. There was a similar pattern at the state level, where job growth in the clean energy economy outperformed overall job growth in 38 states and the District of Columbia during the same period. The report also found that this promising sector is poised to expand significantly, driven by increasing consumer demand, venture capital infusions, and federal and state policy reforms.

Get and read the report yourself. It's another way to understand why doing good also means doing well! [Click here](#) to go to the Pew Environment Group web site.

RECYCLING — WHAT AND WHY

Last month's EES of the Month – **Green Trash Bags** – was the proverbial tip of the iceberg, to mix metaphors. Here's a detailed view of the impact of recycling — or more accurately not recycling, with thanks to our summer intern, **Russell Foxworthy**.



The Earth does not have an endless supply of raw materials. Unfortunately, modern consumerism does not take this fact into consideration. The average American consumer will throw out 1,602 pounds of trash per year, making the United States the largest producer of trash in the world. With consumerism and population continuing to grow, it is now more important than ever that we recycle.

Recycling is by no means a new concept. Humans have been doing it for centuries, although most recycling took place during times of war and recession. However, recycling has recently become much easier and widespread, thanks to new technologies, new methods of transportation, and awareness campaigns.

When resources are recycled, there is less demand for exhuming raw materials from the Earth. This means that more natural landscapes can remain untouched and pristine. Recycling saves municipalities money. Some people disagree with this statement because the process of recycling is more costly than dumping all waste into a landfill. This is true, but municipalities make that money back and more when they sell the recycled materials to manufacturers. On average, it costs a city \$30/ton to recycle trash compared to \$50/ton to send it to the landfill, and \$65 > \$75/ton to incinerate. A recycling center in Wellesley makes about \$800,000 every year from selling recycled materials that its residents separate. Keep in mind that the more categories you sort yourself, the less your municipality has to do and the more money it saves.

While not all towns recycle, 4 in 5 Americans have stated that they are willing to separate their garbage into different recyclable categories. This is great news for the environment, and a reason to prompt your community to initiate recycling if it does not do so now.

Here are examples of the many categories that your recyclables are sorted into after they are taken from your curb:

Metals: Aluminum, Copper, Metal/Light Iron.

Household Recycling: Boxboard and Chipboard, Brown Paper Bags, Cardboard and Corrugated Cartons, Mixed Office Paper, Mixed Paper, Newspapers, Refundable Containers, Glass (Brown, Green, Clear), Steel/Tinned Cans, Plastic Bottles, Plastic Non-Bottles, Plastic Bags, Aluminum Foil and Trays, and Aluminum Cans.

In addition to recycling, some items that cannot be recycled, but have other uses or are too hazardous to put into landfills are:

Special/Hazardous: Appliances (Dishwashers, Air Conditioners, etc.), Automotive Batteries, Computers and Monitors, Fluorescent Bulbs, Paint, Propane Tanks, Tires, Waste Oil, Cell Phones, Electronic Media, Household Batteries, and Ink Cartridges.

Some of these items can be very harmful if they are incinerated (where they can enter the air) or if they are placed in landfills (where they can taint water supplies if the landfill is not properly sealed).

And here's a key point:

Because there are so many categories, many municipalities do not have the time or resources to sort all items into their proper place. **If you feel like your town is one of these, feel free to take your garbage to a nearby recycling center (most towns either have one in them or adjacent to them) and sort it yourself there. The Earth will thank you!**



Meet Russell Foxworthy



Ever felt like what you are doing helps hold the world together?

Well, take a look at our summer intern, Russell Foxworthy of Brookline, and the lengths he goes to in finding ways to help care for creation.

Russell is currently an Environmental Studies major at Brandeis University. He will be going into his Sophomore year in fall, 2009. He is a graduate of Brookline High School, and has attended All Saints Parish in Brookline for his entire life. (All Saints is a MIP&L member. Be sure your congregation is also!)

Says Russell: "I decided to join Massachusetts Interfaith Power and Light as an intern so I could get some experience in the field, and because I believe strongly in its mission to help houses of worship save money and the environment. After college I would like find a job somewhere in the Environmental Studies field, whether it be as a consultant or an employee of the EPA so that I may aid in the protection of our planet."

THE ONE THING TO KNOW



If you know only one thing about global warming, here is the key thing to know: **350**. '350' represents safety. 350 parts per million is the amount of carbon dioxide (CO2) in the atmosphere that our planet can sustain without causing cataclysmic, irreversible damage to life as we know it. Burning oil, coal, and gas has pumped an unsafe level of global warming pollution into the atmosphere. The atmosphere now holds more than 390 parts per million CO2.

Please join us in signing the **Interfaith Call for 350**, a global petition from Protestants, Catholics, Jews, Muslims, Buddhists and people of widely diverse beliefs. We hope to get 350,000 signatures by October 24, the **International Day of Climate Action**. Visit: www.350.org and watch the new 350.org video

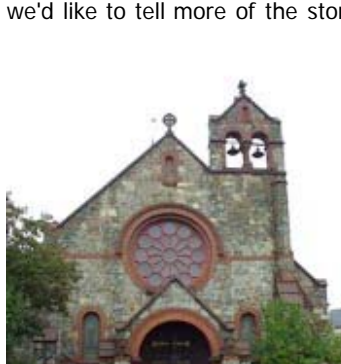
While you're at it, please sign up to create a local event on October 24, joining thousands of actions that day around the world. Here in Amherst, we plan a lively, memorable event on the Town Common that will include music, speakers, ringing the church's steeple bell 350 times, and having a "die-in" of 350 people dressed as maple trees. (Maple trees are among the expected casualties of a warmer New England.)

The next international treaty on climate change will be negotiated in Copenhagen this December. Let's send a clear message to world leaders, most immediately Senator John Kerry, who will be at the U.N. negotiations: the solutions to climate change must be equitable, grounded in science, and meet the scale of the crisis.

— **The Rev. Margaret Bullitt-Jonas**, Priest Associate, Grace Church (Amherst, MA)

CASE STUDIES — YES, SUCCESS HAPPENS!

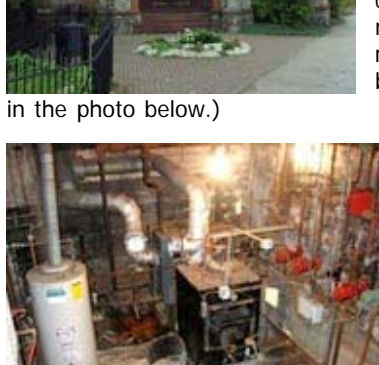
Ever wonder if anybody, anywhere actually makes those huge improvements? Well, the answer is Yes. In fact, there are many. And we'd like to tell more of the stories.



For now, a quick look at St. James, Cambridge.

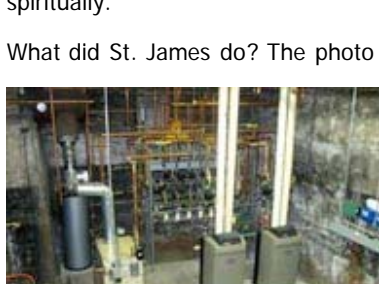
St James is a large, 19th century facility in Porter Square, Cambridge. In 2003 St James was among the first to have MIP&L complete an Environmental Stewardship Assessment.

That study found old, hugely inefficient heating systems (boilers, controls, radiation) and steadily mounting use and even higher rates of increase in costs. (The old boilers and DHW tanks are shown in the photo below.)



A few years passed. A few things were done, what we call "low-hanging fruit". Then the boiler failed for the funeral service of a beloved member. Action became essential both practically and spiritually.

What did St. James do? The photo below shows the story.



In summary ...

Heating & DHW – CO2 generated for heating and DHW only about 120,000 lbs compared to over 248,000 lbs if the old oil/steam system were still in place, a reduction of over 50%!

Electricity – Electricity use in 2008 only 80% that of 2001.

Total cost in 2008 for all utilities was about \$25,000, compared to an estimated \$47,760 if still on the old system. The CO2 reduction is the equivalent of taking 14 cars off the road.

Thank you, St. James, for your environmental stewardship.

To download the full case study, [click here](#). And go to [MIP&L web site](#) to read more success stories!

So here is the challenge for you — we need stories of success, of all sorts, in all places. Please write your story. If you need help, email Tom Nutt-Powell at nuttpowell@aol.com. Or call him at 617-821-6107.

MIP&L is a **mutual ministry**. We need to help each other in every way possible. Don't put it off.

EES of the Month — RECYCLING

Captivated by the information above? Want more on this topic???

Go to the MIP&L homepage and click on the [EES of the Month](#) link.

And then implement, at home, at your house-of-worship, and everywhere!

If we don't, who will???

Peace and blessings,

Your friends at MIP&L



We do not inherit the earth from our ancestors, we borrow it from our children.

—Native American Proverb

Know somebody who should

receive this newsletter?

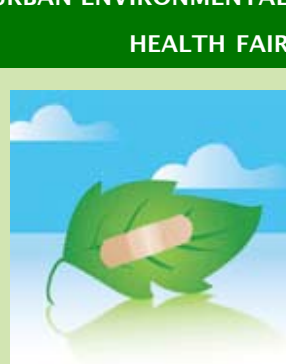
Let us know.

We're happy to add all to the list. And of course, **just forward it now!** (use the forward link at the bottom of this newsletter).

To add to our list, visit our website, click "[Join our E-mail List!](#)" (under "Membership") and fill the sign up box.

Or send us an email at MIPandL@MIPandL.org with the email addresses to be added to our mailing list. Write "add to MIP&L email" in the subject line.

URBAN ENVIRONMENTAL HEALTH FAIR



Saturday, June 20 at 2:00 pm in **Boston's Dorchester neighborhood**

Are communities of color in greater risk of environmentally related diseases like cancer, asthma, diabetes, etc?

What can we do to protect ourselves from environmental racism?

Hosted by: **Healthy Environment Leadership Project (HELP)** in collaboration with **St. Katherine Drexel Parish and Way of the Cross Holy Church**

517 Blue Hill Avenue, Dorchester (Grove Hall) MBTA bus lines #28 and #45

NO CHARGE

Contact:

James Lojogo: 207-266-2420, Xavier Myers 617-686-5018, Gina Pitts 617-586-5084

OUR THANKS ...

to the following members, now current on annual member fees.

If your congregation is not on this list, please attend to this now.

If you have questions, email mipandl@mipandl.org.

- Amherst (Grace Church)
- Andover (Christ Church)
- Bedford (1st Parish)
- Belmont (Temple Beth-El, 1st Parish)
- Boston (Church of the Covenant, Boston Synagogue)
- Brookline (All Saints, Our Saviour)
- Cambridge (Christ Church)
- Duxbury (1st Parish)
- Framingham (Frank Conf. of UCC)
- Holliston (St. John's)
- Gloucester (West Gloucester Trinitarian)
- Hanover (St. Andrew's)
- Harwich (Harwich United Methodist)
- Holliston (1st Congregational)
- Newton (Cong. B'nai Israel)
- Northampton (Cong. B'nai Israel)
- Wellesley (Mt St Vincent)
- Woburn (Lutheran Church of the Redeemer)
- Worcester (Holy Name Central Catholic High School, Temple Emanuel, St. Luke's)